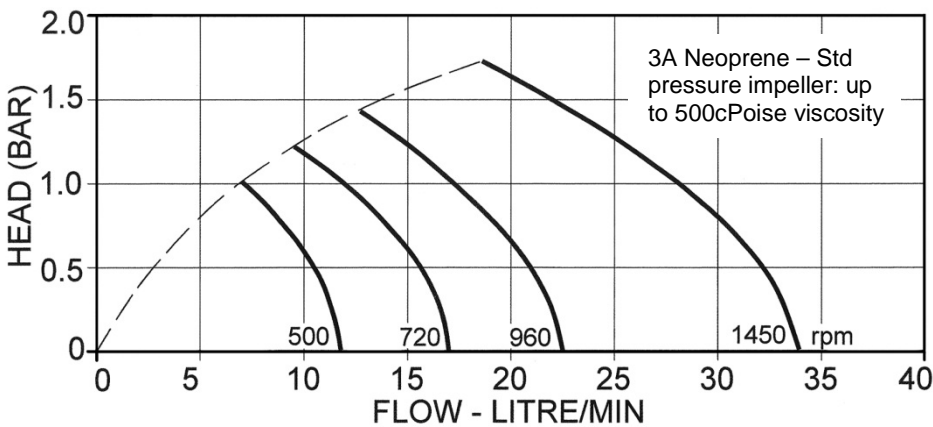


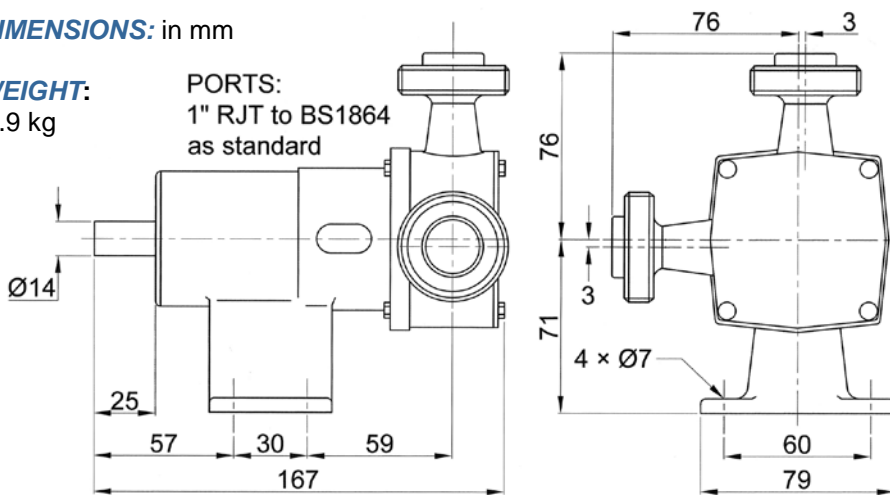
PUMP PERFORMANCE:



DIMENSIONS: in mm

WEIGHT:
2.9 kg

PORTS:
1" RJT to BS1864
as standard



PORT TYPE: 1" RJT to BS1864 standard

Other hygienic ports available:- Tri-clamp, IDF/ISS, 3A Bevel seat, DIN 11851, and SMS 1145

IMPELLER TEMPERATURE RANGE:

MATERIAL	PRESSURE	TEMP °C
3A Neoprene	STANDARD	4 - 65
EPDM	STANDARD	4 - 90
3A Neoprene	HIGH	4 - 65
EPDM	HIGH	4 - 90

OTHER SPECIFICATIONS:

SEAL OPTIONS	Carbon / Ceramic mechanical face seal (standard). Tungsten carbide / ceramic hard faced seal Flushed options for crystallising fluids
SEAL ELASTOMER	Food grade nitrile
PUMP HEAD	Stainless steel 316, machined interior and electro polished exterior finish
END COVER	Stainless steel 316 grade
SHAFT	Stainless steel 316 grade
BEARINGS	Greased ball bearings
BEARING HOUSING	Epoxy coated cast iron



a xylem brand

28200 SERIES
HYGIENIC STAINLESS
STEEL PEDESTAL PUMP

40 size



- * Self primes from dry up to 3 metres
- * Flows up to 34 litres per minute
- * Pressure up to 3.0 bar
- * Handles soft solids - max. 8mm diameter
- * FDA Materials Certified
- * Clean-In-Place (CIP) or easy strip clean
- * Handles viscosities up to 50,000 centiPoise
- * Minimal shear to thixotropic fluids

Xylem Water Solutions UK Ltd
Bingley Road
Hoddesdon
Hertfordshire • EN11 0BU • UK

Tel: +44 (0)1462 480380
Fax: +44 (0)1462 482422
mail@cleghorn.co.uk
www.jabscoshop.com



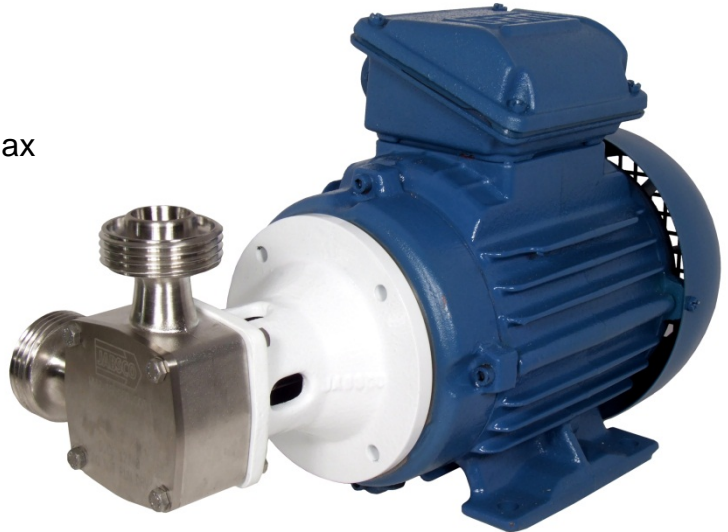


a xylem brand

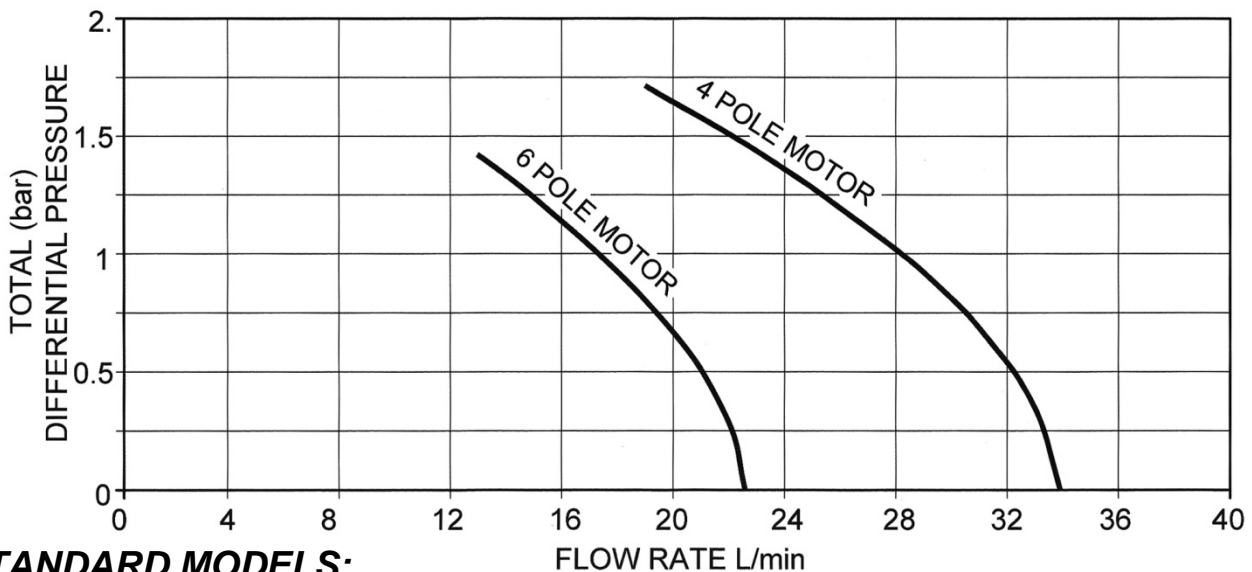
28220 SERIES FLEX IMPELLER HYGIENIC STAINLESS STEEL MOTOR PUMP UNITS (P40 size)

FEATURES:

- Self-priming from dry up to 3 metres
- Flows up to 33 litres per minute
- Pressures up to 1.7 bar.
High pressure impeller version 2.5 bar max
- Handles soft solids up to 8mm diameter
- FDA Materials Certified
- Clean-In-Place (CIP) or easy strip clean
- Maximum viscosity:
4 pole motor approx 150cP
6 pole motor approx 700cP
- Low shear design



PUMP PERFORMANCE:



STANDARD MODELS:

MODEL	IMPELLER	PORTS	SEAL	MOTOR	SPEED	POWER
28220-4105C	3A Neoprene	1" RJT	Carbon / Ceramic	230/1/50Hz	4 pole	0.55kW
28220-4105L	3A Neoprene	1" RJT	Carbon / Ceramic	230/1/50Hz	6 pole	0.37kW
28220-4105E	3A Neoprene	1" RJT	Carbon / Ceramic	230-400/3/50Hz	6 pole	0.55kW
28220-4105H	3A Neoprene	1" RJT	Carbon / Ceramic	230-400/3/50Hz	4 pole	0.55kW

Other hygienic ports available: Tri-clamp, IDF/ISS, 3A Bevel seat, DIN11851, and SMS 1145

DOC647/17

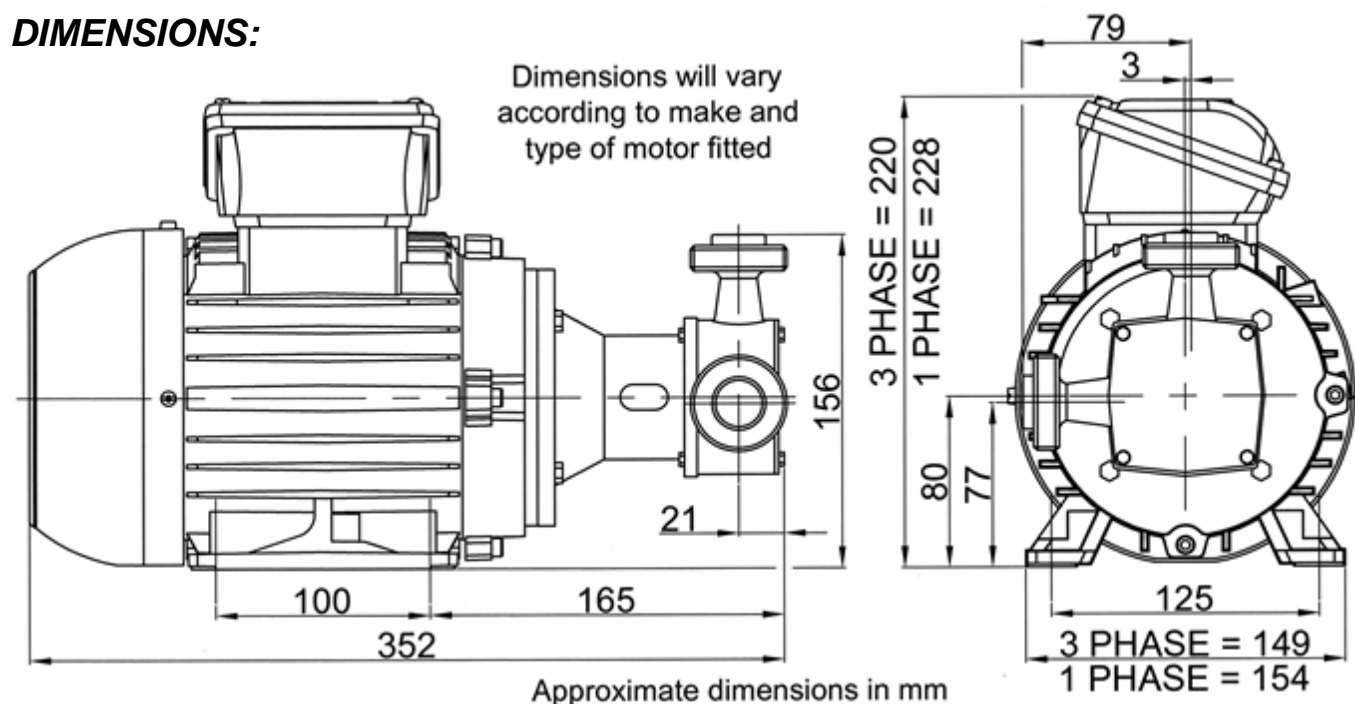
IMPELLER TEMPERATURE RANGE:

ELASTOMER OPTION	3A Neoprene	E.P.D.M.
TEMPERATURE RANGE	4°C to 65°C	4°C to 90°C

SPECIFICATIONS:

SEAL OPTIONS:	Carbon / ceramic mechanical face seal (standard). Tungsten carbide / ceramic hard faced seal Flushed options for crystallising fluids
SEAL ELASTOMER:	Food grade nitrile
PUMP HEAD:	Stainless steel 316, machined interior and electro polished exterior finish
END COVER:	Stainless steel 316 grade
SHAFT:	Stainless steel 316 grade
MOTOR:	TEFV & IP55
MOTOR ADAPTOR:	Epoxy coated cast iron

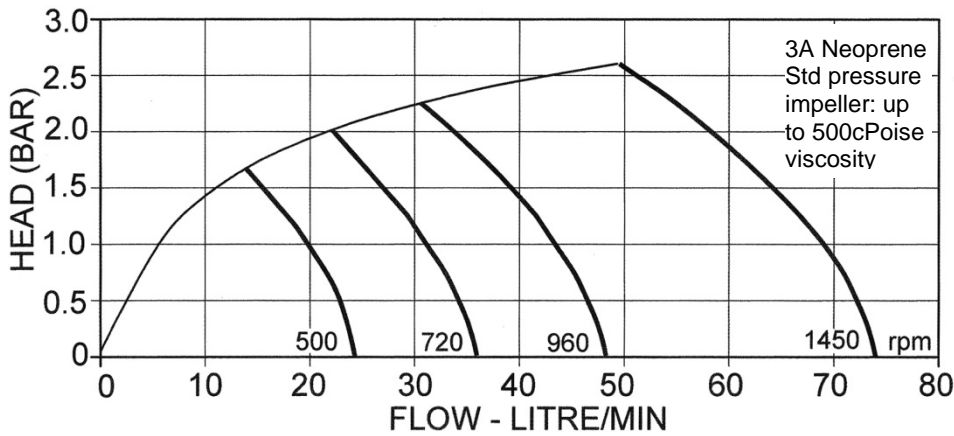
DIMENSIONS:



WARNING

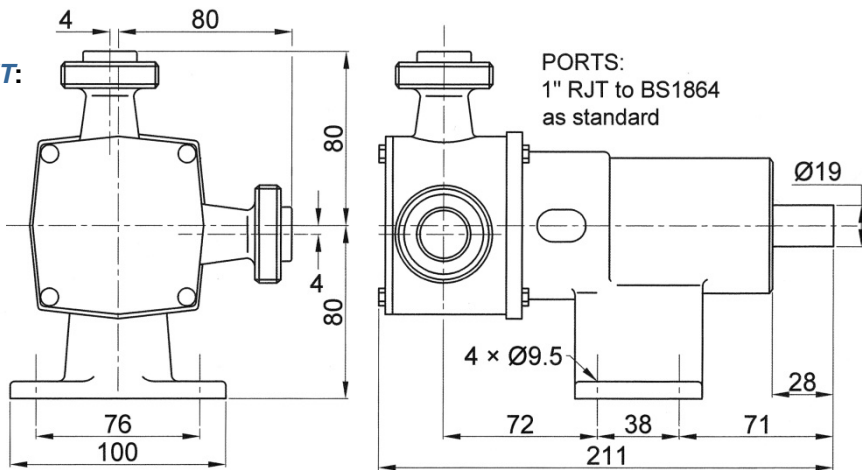
Explosive hazard. **DO NOT** pump petrol, solvents, thinners or other flammable liquids with a flash point below 37°C (98°F)

PUMP PERFORMANCE:



DIMENSIONS: in mm

WEIGHT:
4.4 kg



PORT TYPE: 1" RJT to BS1864 standard

Other hygienic ports available:- Tri-clamp, IDF/ISS, 3A Bevel seat, DIN 11851, and SMS 1145

IMPELLER TEMPERATURE RANGE:

MATERIAL	PRESSURE	TEMP °C
3A Neoprene	STANDARD	4 - 65
EPDM	STANDARD	4 - 90
3A Neoprene	HIGH	4 - 65
EPDM	HIGH	4 - 90

OTHER SPECIFICATIONS:

SEAL OPTIONS	Carbon / Ceramic mechanical face seal (standard). Tungsten carbide / ceramic hard faced seal Flushed options for crystallising fluids
SEAL ELASTOMER	Food grade nitrile
PUMP HEAD	Stainless steel 316, machined interior and electro polished exterior finish
END COVER	Stainless steel 316 grade
SHAFT	Stainless steel 316 grade
BEARINGS	Greased ball bearings
BEARING HOUSING	Epoxy coated cast iron



a xylem brand

28300 SERIES
HYGIENIC STAINLESS
STEEL PEDESTAL PUMP

80 size



- * Self primes from dry up to 3.5 metres
- * Flows up to 74 litres per minute
- * Pressure up to 4.0 bar
- * Handles soft solids - max. 12mm diameter
- * FDA Materials Certified
- * Clean-In-Place (CIP) or easy strip clean
- * Handles viscosities up to 50,000 centiPoise
- * Minimal shear to thixotropic fluids

Xylem Water Solutions UK Ltd
Bingley Road
Hoddesdon
Hertfordshire • EN11 0BU • UK

Telephone: +44 (0)1462 480380
Fax: +44 (0)1462 482422
mail@cleghorn.co.uk
www.jabscoshop.com



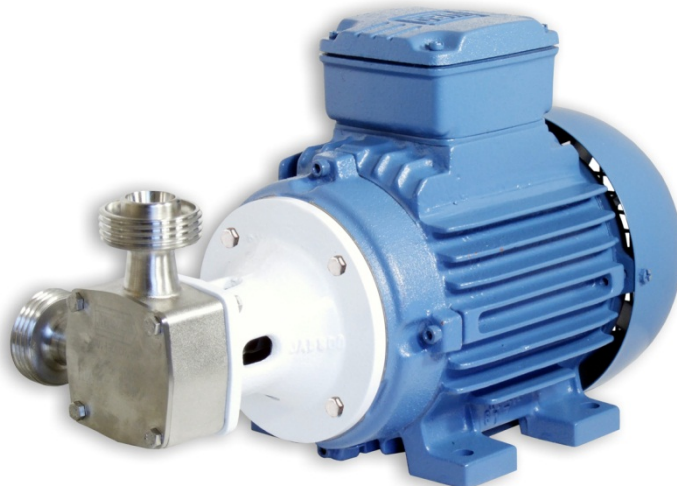


a xylem brand

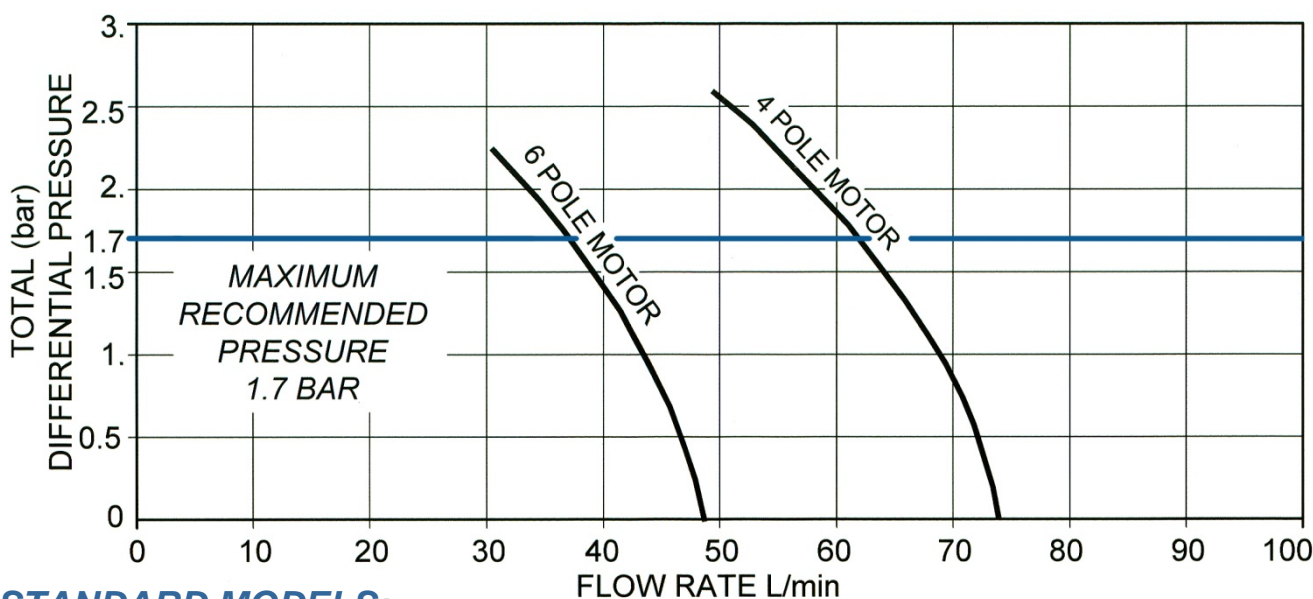
28320 SERIES FLEX IMPELLER HYGIENIC STAINLESS STEEL MOTOR PUMP UNITS (P80 size)

FEATURES:

- Self primes from dry up to 3.5 metres
- Flows up to 74 litres per minute
- Pressures up to 1.7 bar. (*Pressures over 1.7 bar will reduce shaft life*)
- Handles soft solids up to 12mm diameter
- FDA Materials Certified
- Clean-In-Place (CIP) or easy strip clean
- Maximum viscosity:
 - 4 pole motor approx 150cP
 - 6 pole motor approx 700cP
- Low shear design



PUMP PERFORMANCE:



STANDARD MODELS:

MODEL	IMPELLER	PORTS	SEAL	MOTOR	SPEED	POWER
28320-4105C	3A Neoprene	1" RJT	Carbon / Ceramic	230/1/50Hz	4 pole	0.55kW
28320-4105L	3A Neoprene	1" RJT	Carbon / Ceramic	230/1/50Hz	6 pole	0.37kW
28320-4105E	3A Neoprene	1" RJT	Carbon / Ceramic	230-400/3/50Hz	6 pole	0.55kW
28320-4105H	3A Neoprene	1" RJT	Carbon / Ceramic	230-400/3/50Hz	4 pole	0.55kW

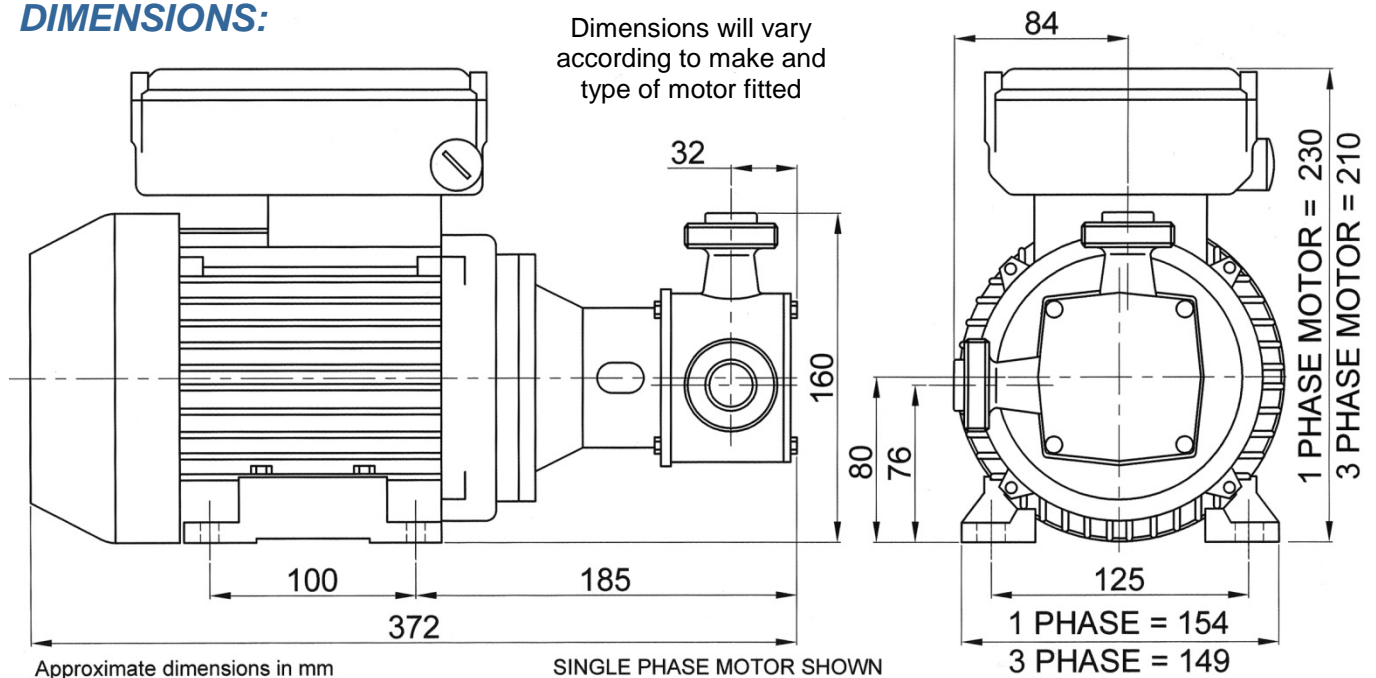
Other hygienic ports available: Tri-clamp, IDF/ISS, 3A Bevel seat, DIN11851, and SMS 1145

IMPELLER TEMPERATURE RANGE:

ELASTOMER OPTION	3A Neoprene	E.P.D.M.
TEMPERATURE RANGE	4°C to 65°C	4°C to 90°C

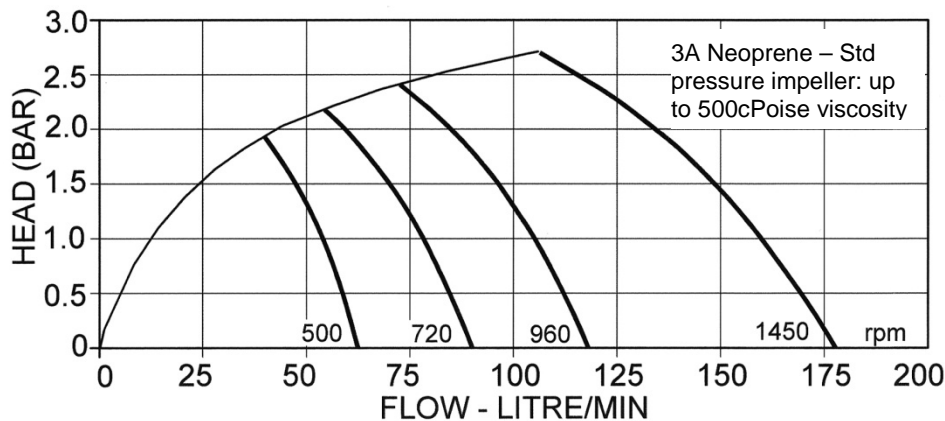
SPECIFICATIONS:

SEAL OPTIONS:	Carbon / ceramic mechanical face seal (standard). Tungsten carbide / ceramic hard faced seal Flushed options for crystallising fluids
SEAL ELASTOMER:	Food grade nitrile
PUMP HEAD:	Stainless steel 316, machined interior and electro polished exterior finish
END COVER:	Stainless steel 316 grade
SHAFT:	Stainless steel 316 grade
MOTOR:	TEFV & IP55
MOTOR ADAPTOR:	Epoxy coated cast iron

DIMENSIONS:

WARNING

Explosive hazard. **DO NOT** pump petrol, solvents, thinners or other flammable liquids with a flash point below 37°C (98°F)

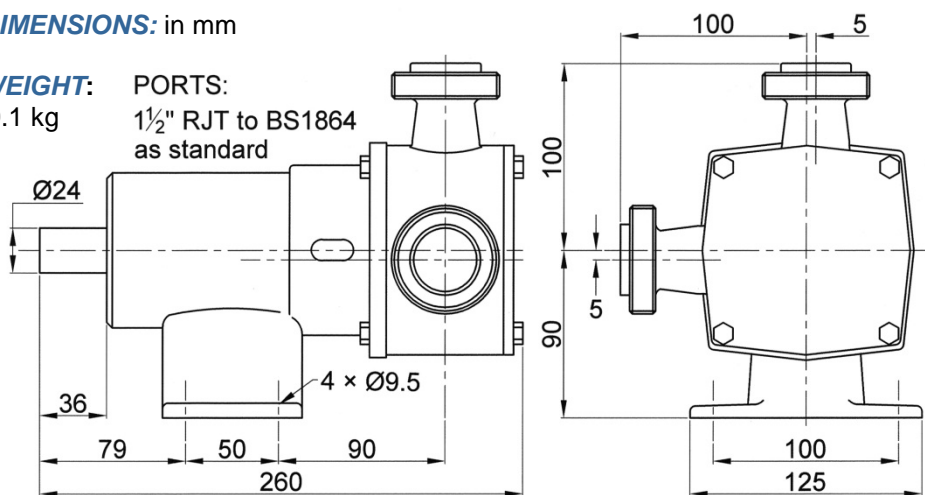
PUMP PERFORMANCE:



DIMENSIONS: in mm

WEIGHT: 9.1 kg

PORTS: 1½" RJT to BS1864 as standard



PORT TYPE: 1½" RJT to BS1864 standard

Other hygienic ports available:- Tri-clamp, IDF/ISS, 3A Bevel seat, DIN 11851, and SMS 1145

IMPELLER TEMPERATURE RANGE:

MATERIAL	PRESSURE	TEMP °C
3A Neoprene	STANDARD	4 - 65
EPDM	STANDARD	4 - 90
3A Neoprene	HIGH	4 - 65
EPDM	HIGH	4 - 90

OTHER SPECIFICATIONS:

SEAL OPTIONS	Carbon / Ceramic mechanical face seal (standard). Tungsten carbide / ceramic hard faced seal Flushed options for crystallising fluids
SEAL ELASTOMER	Food grade nitrile
PUMP HEAD	Stainless steel 316, machined interior and electro polished exterior finish
END COVER	Stainless steel 316 grade
SHAFT	Stainless steel 316 grade
BEARINGS	Greased ball bearings
BEARING HOUSING	Epoxy coated cast iron



a xylem brand

28400 SERIES
HYGIENIC STAINLESS
STEEL PEDESTAL PUMP
200 size



- * Self primes from dry up to 5.0 metres
- * Flows up to 176 litres per minute
- * Pressure up to 4.0 bar
- * Handles soft solids - max. 16mm diameter
- * FDA Materials Certified
- * Clean-In-Place (CIP) or easy strip clean
- * Handles viscosities up to 50,000 centiPoise
- * Minimal shear to thixotropic fluids

Xylem Water Solutions UK Ltd
Bingley Road
Hoddesdon
Hertfordshire • EN11 0BU • UK

Telephone: +44 (0)1462 480380
Fax: +44 (0)1462 482422
mail@cleghorn.co.uk
www.jabscoshop.com



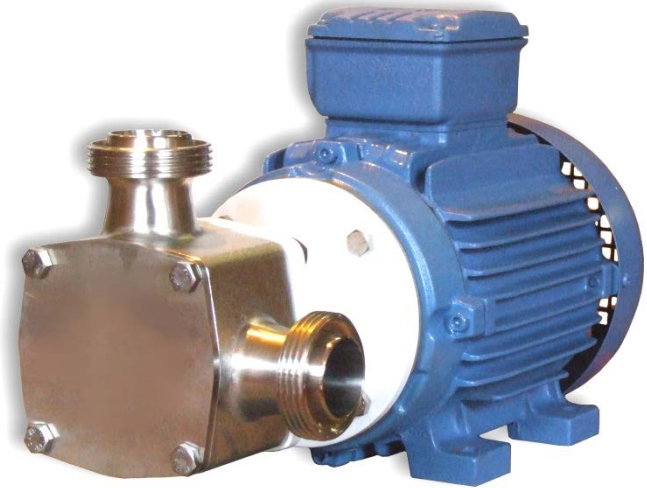
JABSCO

a xylem brand

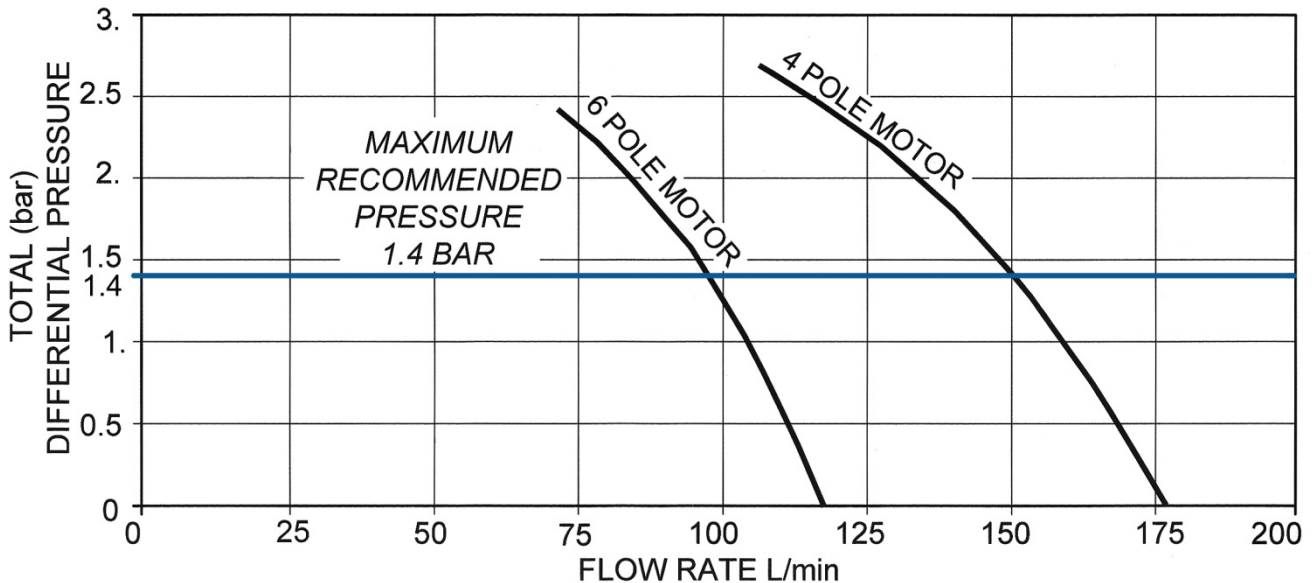
28420 SERIES FLEX IMPELLER HYGIENIC STAINLESS STEEL MOTOR PUMP UNITS (P200 size)

FEATURES:

- Self primes from dry up to 4 metres
- Flows up to 177 litres per minute
- Pressures up to 1.4 bar. (*Pressures over 1.4 bar will reduce shaft life*)
- Handles soft solids up to 16mm diameter
- FDA Materials Certified
- Clean-in-Place (CIP) or easy strip clean
- Maximum viscosity:
 - 4 pole motor approx 150cP
 - 6 pole motor approx 700cP
- Low shear design



PUMP PERFORMANCE:



STANDARD MODELS:

MODEL	IMPELLER	PORTS	SEAL	MOTOR	SPEED	POWER
28420-4115C	3A Neoprene	1½" RJT	Carbon / Ceramic	230/1/50Hz	4 pole	1.5kW
28420-4115E3	3A Neoprene	1½" RJT	Carbon / Ceramic	230-400/3/50Hz	6 pole	1.1kW
28420-4115H3	3A Neoprene	1½" RJT	Carbon / Ceramic	230-400/3/50Hz	4 pole	1.5kW

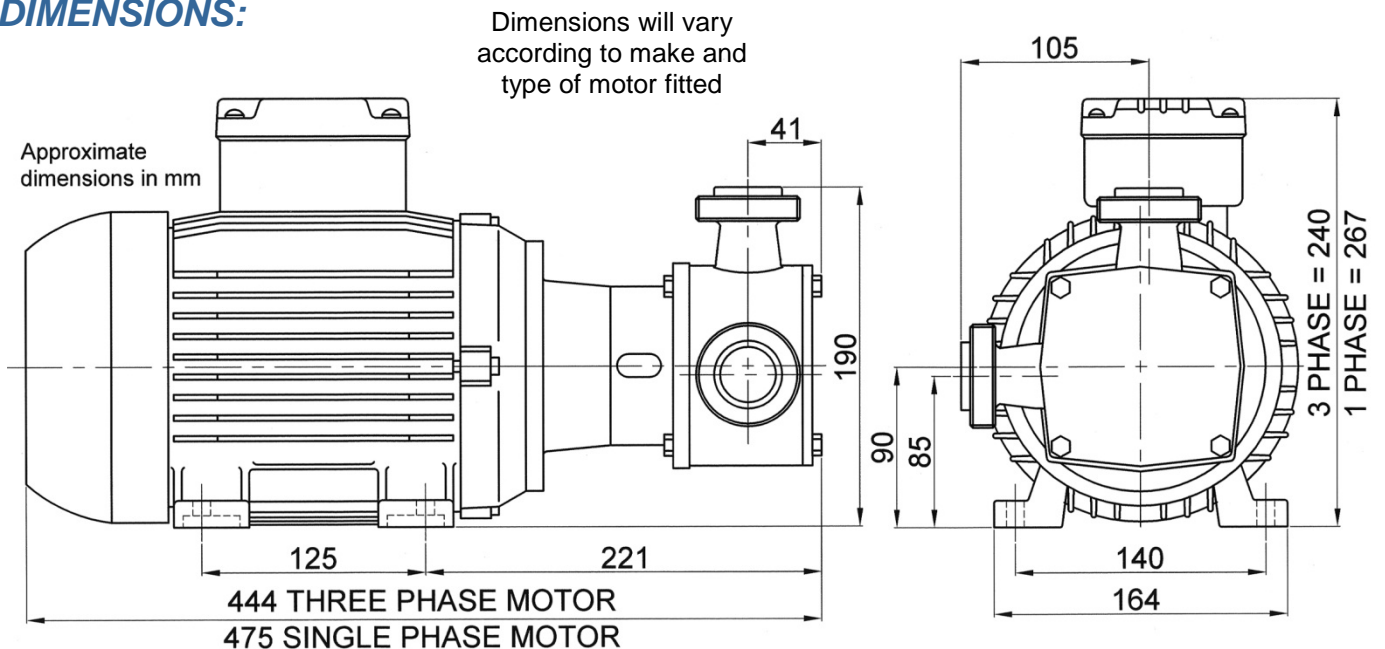
Other hygienic ports available: Tri-clamp, IDF/ISS, 3A Bevel seat, DIN11851, and SMS 1145

IMPELLER TEMPERATURE RANGE:

ELASTOMER OPTION	3A Neoprene	E.P.D.M.
TEMPERATURE RANGE	4°C to 65°C	4°C to 90°C

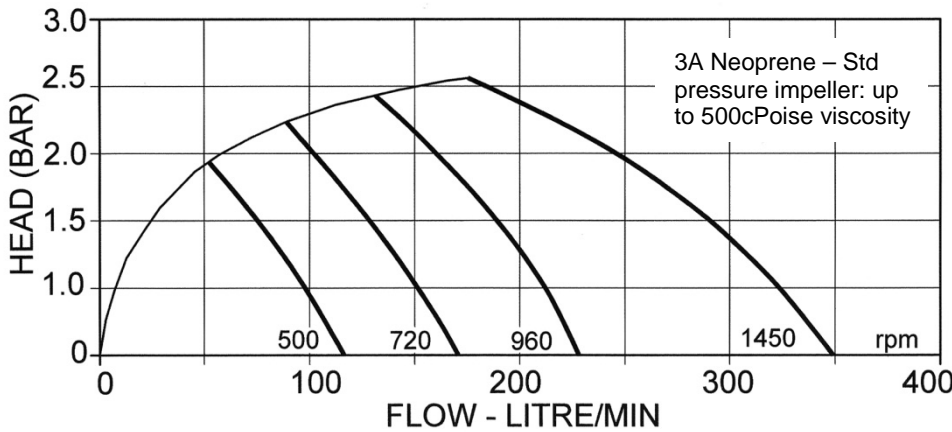
SPECIFICATIONS:

SEAL OPTIONS:	Carbon / ceramic mechanical face seal (standard). Tungsten carbide / ceramic hard faced seal Flushed options for crystallising fluids
SEAL ELASTOMER:	Food grade nitrile
PUMP HEAD:	Stainless steel 316, machined interior and electro polished exterior finish
END COVER:	Stainless steel 316 grade
SHAFT:	Stainless steel 316 grade
MOTOR:	TEFV & IP55
MOTOR ADAPTOR:	Epoxy coated cast iron

DIMENSIONS:

WARNING

Explosive hazard. **DO NOT** pump petrol, solvents, thinners or other flammable liquids with a flash point below 37°C (98°F)

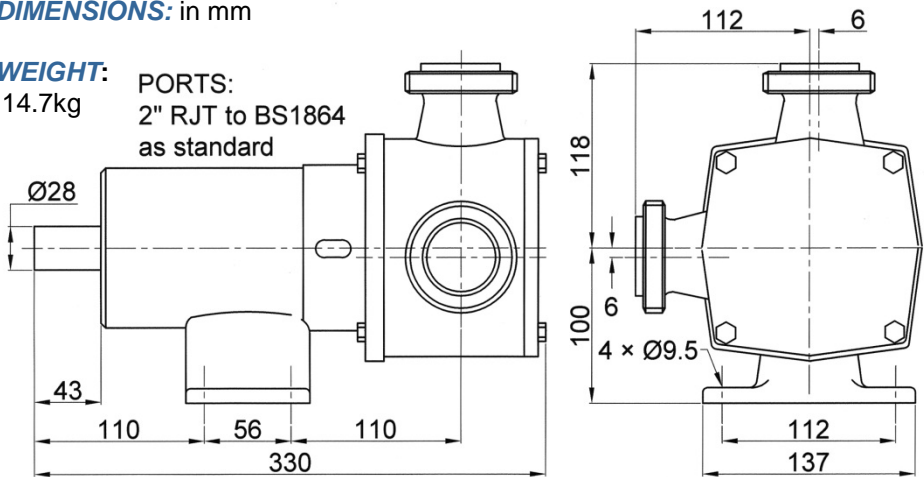
PUMP PERFORMANCE:



DIMENSIONS: in mm

WEIGHT:
14.7kg

PORTS:
2" RJT to BS1864
as standard



PORT TYPE: 2" RJT to BS1864 standard

Other hygienic ports available:- Tri-clamp, IDF/ISS, 3A Bevel seat, DIN 11851, and SMS 1145

IMPELLER TEMPERATURE RANGE:

MATERIAL	PRESSURE	TEMP °C
3A Neoprene	LOW	4 - 65
3A Neoprene	STANDARD	4 - 65
EPDM	STANDARD	4 - 90
3A Neoprene	HIGH	4 - 65
EPDM	HIGH	4 - 90

OTHER SPECIFICATIONS:

SEAL OPTIONS	Carbon / Ceramic mechanical face seal (standard). Tungsten carbide / ceramic hard faced seal Flushed options for crystallising fluids
SEAL ELASTOMER	Food grade nitrile
PUMP HEAD	Stainless steel 316, machined interior and electro polished exterior finish
END COVER	Stainless steel 316 grade
SHAFT	Stainless steel 316 grade
BEARINGS	Greased ball bearings
BEARING HOUSING	Epoxy coated cast iron



a xylem brand

28500 SERIES
HYGIENIC STAINLESS
STEEL PEDESTAL PUMP

370 size



- * Self primes from dry up to 4 metres
- * Flows up to 350 litres per minute
- * Pressure up to 4.0 bar
- * Handles soft solids - max. 18mm diameter
- * FDA Materials Certified
- * Clean-In-Place (CIP) or easy strip clean
- * Handles viscosities up to 50,000 centiPoise
- * Minimal shear to thixotropic fluids

Xylem Water Solutions UK Ltd
Bingley Road
Hoddesdon
Hertfordshire • EN11 0BU • UK

Telephone: +44 (0)1462 480380
Fax: +44 (0)1462 482422
mail@clegghorn.co.uk
www.jabscoshop.com



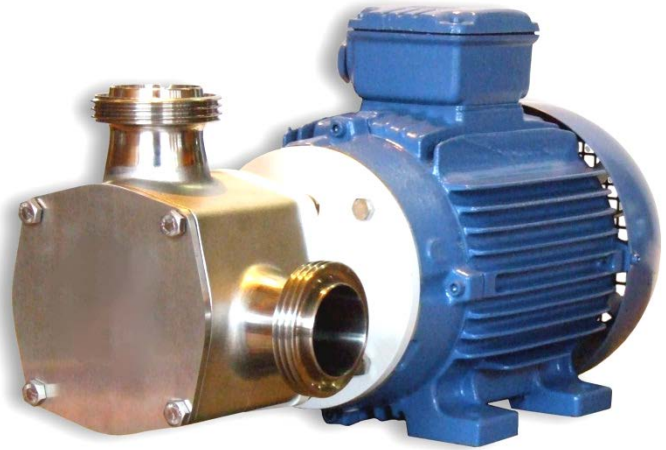
JABSCO

a xylem brand

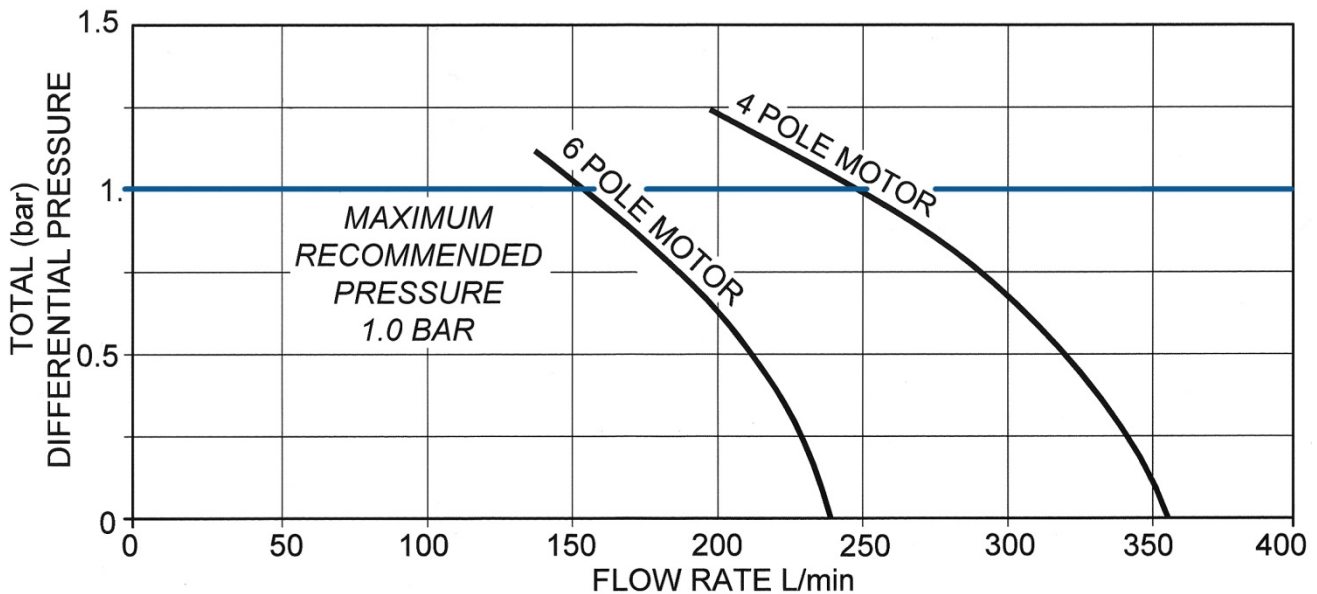
28520 SERIES FLEX IMPELLER HYGIENIC STAINLESS STEEL MOTOR PUMP UNITS (P370 size)

FEATURES:

- Self primes from dry up to 3.5 metres
- Flows up to 355 litres per minute
- Pressures up to 1 bar. (Pressures over 1 bar will reduce shaft life)
- Handles soft solids up to 16mm diameter
- FDA Materials Certified
- Clean-in-Place (CIP) or easy strip clean
- Maximum viscosity:
 - 4 pole motor approx 150cP
 - 6 pole motor approx 700cP
- Low shear design



PUMP PERFORMANCE:



STANDARD MODELS:

MODEL	IMPELLER	PORTS	SEAL	MOTOR	SPEED	POWER
28520-4105C	3A Neoprene	2" RJT	Carbon / Ceramic	230/1/50Hz	4 pole	2.2kW
28520-4105E3	3A Neoprene	2" RJT	Carbon / Ceramic	230-400/3/50Hz	6 pole	1.5kW
28520-4105H3	3A Neoprene	2" RJT	Carbon / Ceramic	230-400/3/50Hz	4 pole	2.2kW

Other hygienic ports available: Tri-clamp, IDF/ISS, 3A Bevel seat, DIN11851, and SMS 1145

28520 SERIES HYGIENIC STAINLESS STEEL MPU

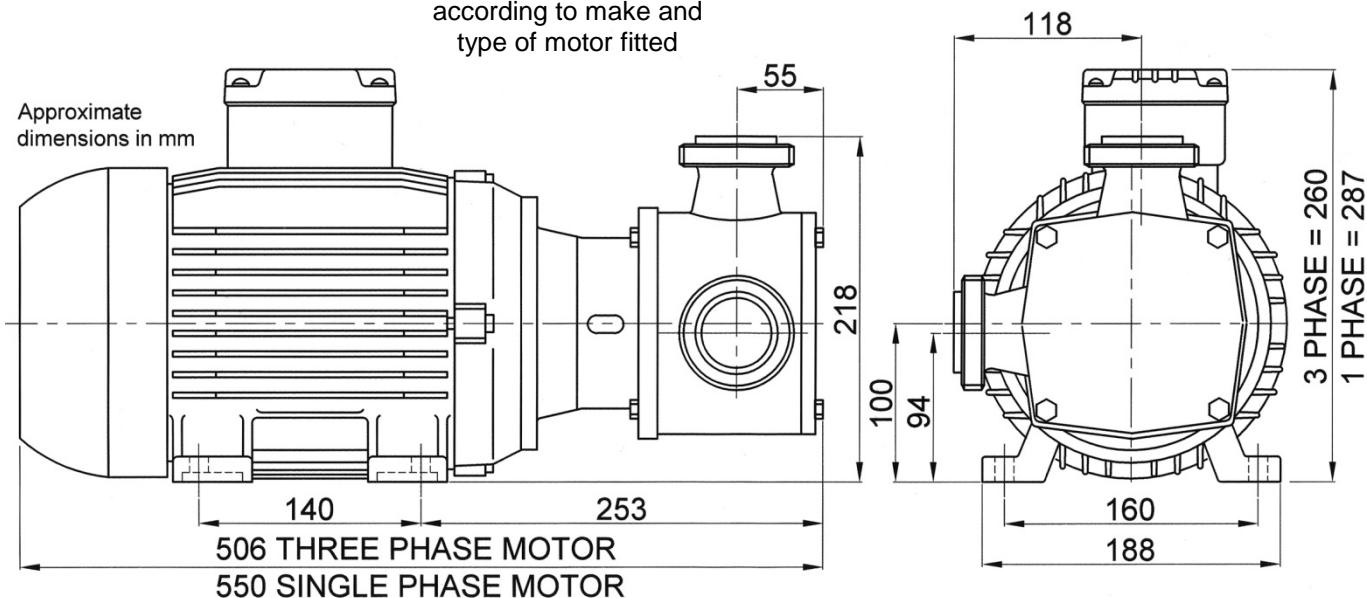
ELASTOMER OPTION	3A Neoprene	E.P.D.M.
TEMPERATURE RANGE	4°C to 65°C	4°C to 90°C

SPECIFICATIONS:

SEAL OPTIONS:	Carbon / ceramic mechanical face seal (standard). Tungsten carbide / ceramic hard faced seal Flushed options for crystallising fluids
SEAL ELASTOMER:	Food grade nitrile
PUMP HEAD:	Stainless steel 316, machined interior and electro polished exterior finish
END COVER:	Stainless steel 316 grade
SHAFT:	Stainless steel 316 grade
MOTOR:	TEFV & IP55
MOTOR ADAPTOR:	Epoxy coated cast iron

DIMENSIONS:

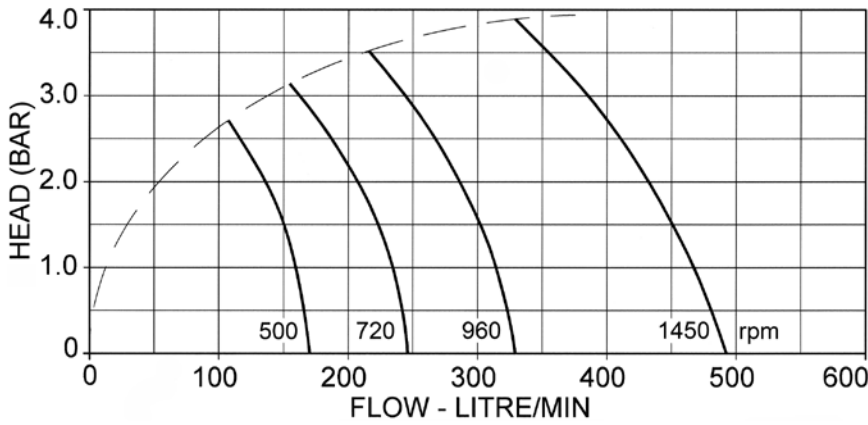
Dimensions will vary according to make and type of motor fitted



WARNING

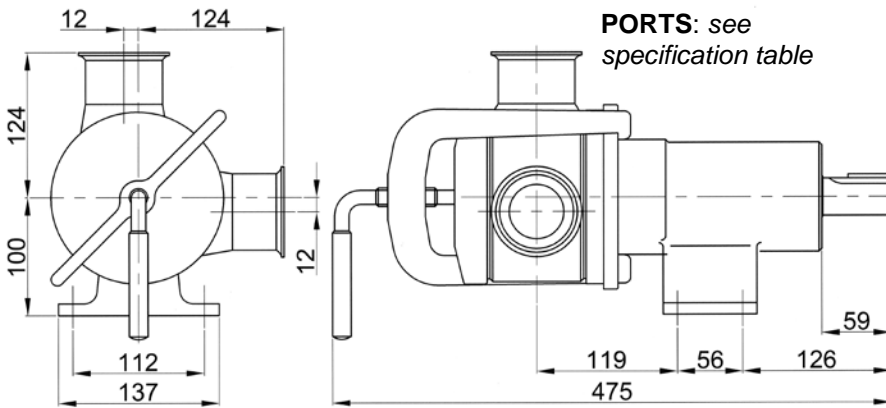
Explosive hazard. **DO NOT** pump petrol, solvents, thinners or other flammable liquids with a flash point below 37°C (98°F)

PUMP PERFORMANCE:



DIMENSIONS:

WEIGHT: 22 kg



SPECIFICATIONS:

IMPELLER	3A Neoprene
SEAL	Carbon / Stainless steel mechanical face Tungsten carbide / Stainless steel hard faced Flushed options for crystallising fluids
SEAL ELASTOMER	Food grade nitrile 'O' rings
PUMP HEAD	Stainless steel 316 grade, machined interior and electro polished exterior finish
END COVER	Stainless steel 316 grade
SHAFT	Stainless steel 316 grade
BEARINGS	Greased ball bearings
BEARING HOUSING	Epoxy coated cast iron

PORTS	2½"	Tri-clamp	28600-1XXX
	2½"	RJT to BS1864	28600-4XXX
	65mm	DIN 11851	28600-6XXX

MODEL RANGE:

TEMPERATURE RANGE	4°C to 65°C
MECHANICAL SEAL OPTIONS	X= port code – see above
Carbon / Stainless steel	28600-X125
Tungsten carbide / SS hard faced	28600-X225
FLUSHED MECHANICAL SEAL	X= port code – see above
Tungsten carbide / SS hard faced	28600-X725
Carbon / Stainless steel	28600-X925



a xylem brand

**28600 SERIES
HYGIENIC STAINLESS
STEEL PEDESTAL PUMP**

500 size



- * Self primes from dry up to 3 metres
- * Flows up to 520 litres per minute
- * Pressure up to 4.0 bar
- * Handles soft solids - max. 18mm diameter
- * FDA Materials Certified
- * Clean-In-Place (CIP) or easy strip clean
- * Handles viscosities up to 50,000 centiPoise
- * Minimal shear to thixotropic fluids
- * Quick release end cover clamp

Xylem Water Solutions UK Ltd
Bingley Road
Hoddesdon
Hertfordshire • EN11 0BU • UK

Telephone: +44 (0)1462 480380
Fax: +44 (0)1462 482422
mail@cleghorn.co.uk
www.jabscoshop.com

