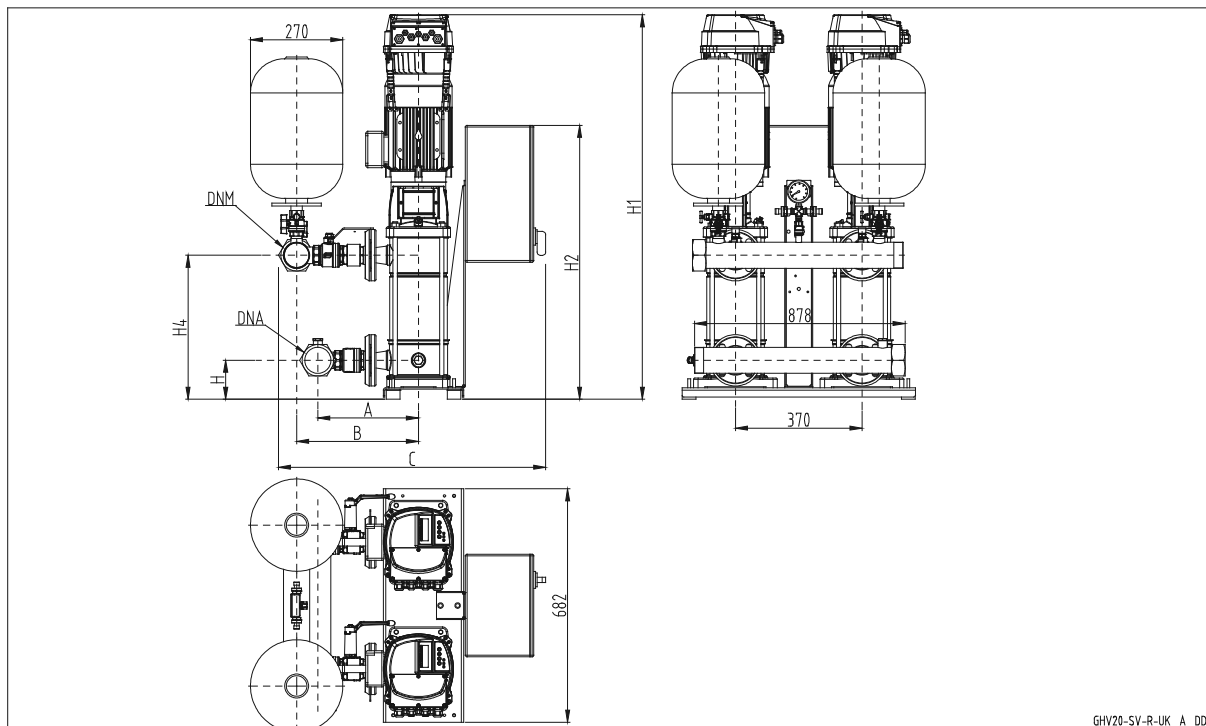


**SET OF 2 PUMPS
SINGLE-PHASE POWER SUPPLY (GHV20.../2)**



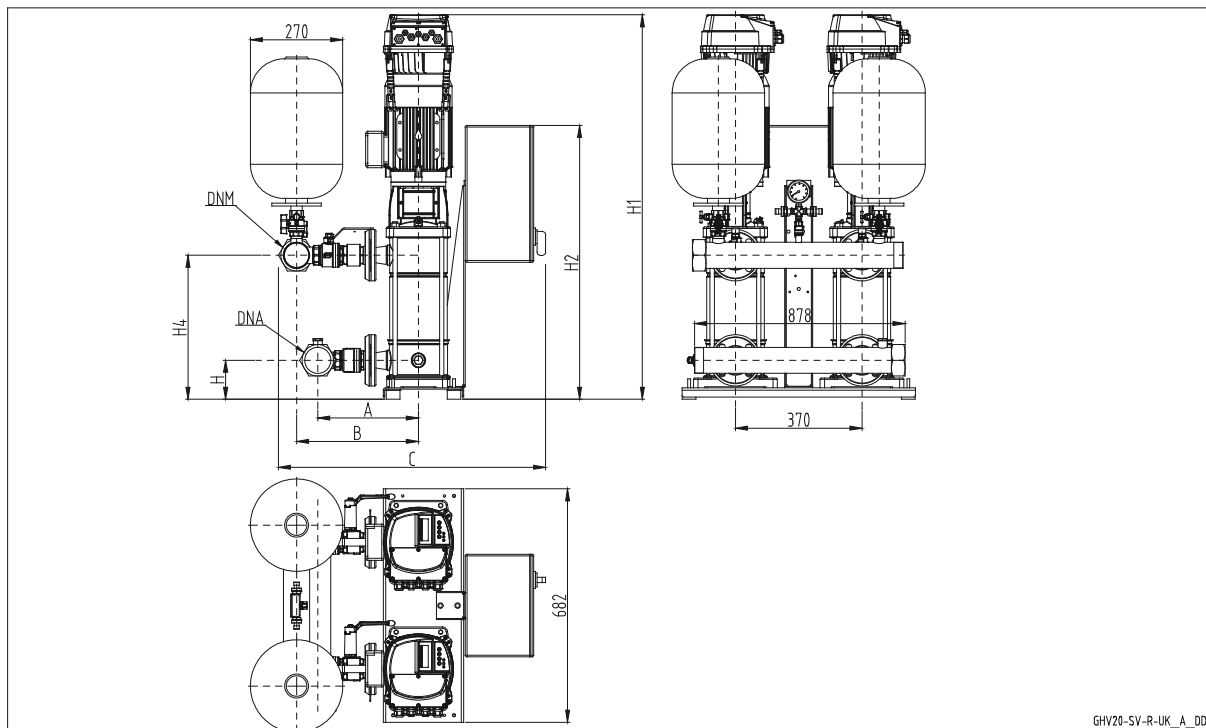
GHV20

GHV 20	DNA	DNM	A	B	C	H	H1	H2	H4
5SV08R011T	R 2"	R 2"	260	329	731	109	895	800	731
5SV11R015T	R 2"	R 2"	260	329	731	109	980	800	731
5SV16R022T	R 2"	R 2"	260	329	731	109	1140	800	731
5SV21R030T	R 2"	R 2"	260	329	731	109	1275	800	731
10SV06R022T	R 2"1/2	R 2"1/2	294	356	766	114	997	800	766

Dimensions in mm. Tolerance ± 10 mm.

ghv20_esv-r-uk-2_a_td

**SET OF 2 PUMPS
THREE-PHASE POWER SUPPLY (GHV20.../4)**

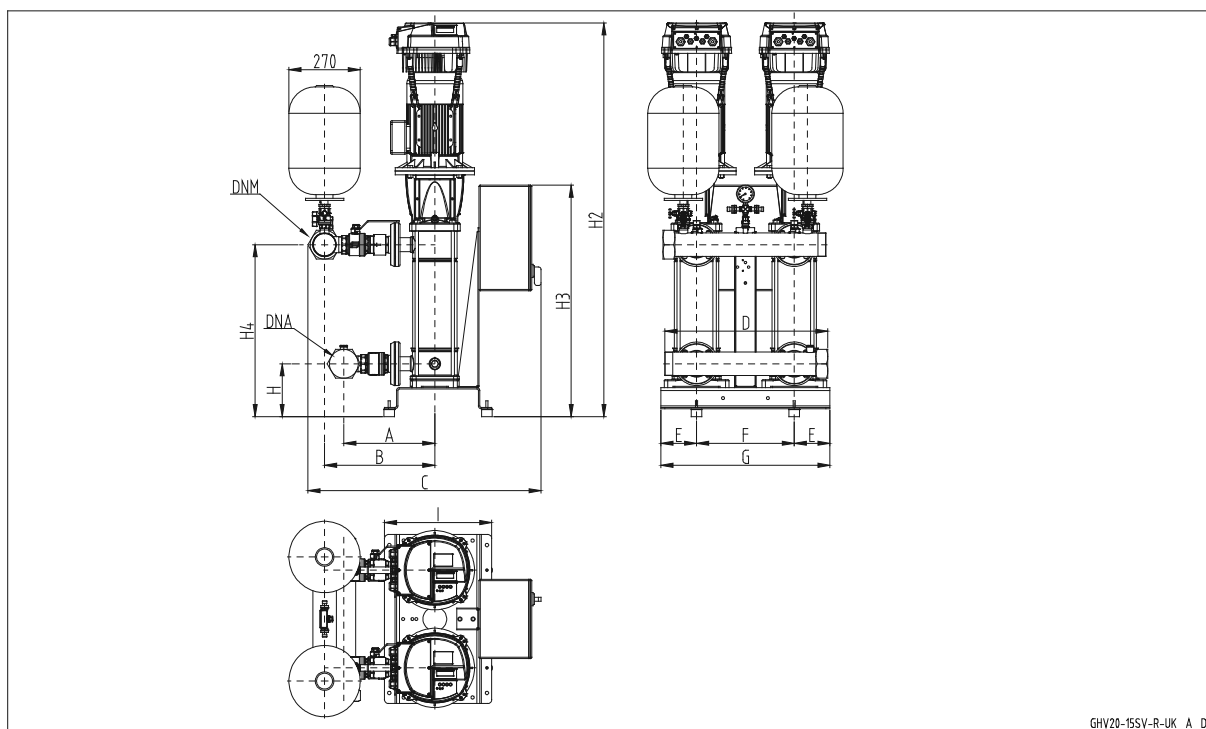


GHV 20	DNA	DNM	A	B	C	H	H1	H2	H4
5SV08R011T	R 2"	R 2"	260	329	731	109	895	800	731
5SV11R015T	R 2"	R 2"	260	329	731	109	980	800	731
5SV16R022T	R 2"	R 2"	260	329	731	109	1140	800	731
5SV21R030T	R 2"	R 2"	260	329	731	109	1275	800	731
10SV06R022T	R 2"1/2	R 2"1/2	294	356	766	114	997	800	766
10SV09R040T	R 2"1/2	R 2"1/2	294	356	766	114	1124	800	766

Dimensions in mm. Tolerance ± 10 mm.

ghv20_esv-r-uk-4_a_td

**SET OF 2 PUMPS
THREE-PHASE POWER SUPPLY (GHV20.../4)**



GHV20

GHV 20	DNA	DNM	A	B	C	D	E	F	G	H	H2	H3	H4	I
10SV13R055T	R 2"1/2	R 2"1/2	294	356	797	610	135	370	640	190	1466	876	625	406
15SV05R040T	R 3"	R 3"	345	418	865	610	135	370	640	200	1162	876	459	406
15SV07R055T	R 3"	R 3"	345	418	865	610	135	370	640	200	1396	876	555	406
15SV09R075T	R 3"	R 3"	345	418	865	610	135	370	640	200	1484	876	651	406
15SV10R110T	R 3"	R 3"	345	418	957	680	260	440	960	250	1673	926	779	730
22SV05R055T	R 3"	R 3"	345	418	865	610	135	370	640	200	1300	876	459	406
22SV07R075T	R 3"	R 3"	345	418	865	610	135	370	640	200	1388	876	555	406
22SV10R110T	R 3"	R 3"	345	418	957	680	260	440	960	250	1673	926	779	730

Dimensions in mm. Tolerance ± 10 mm.

ghv20_15sv-r-uk-4_a_td

Booster sets

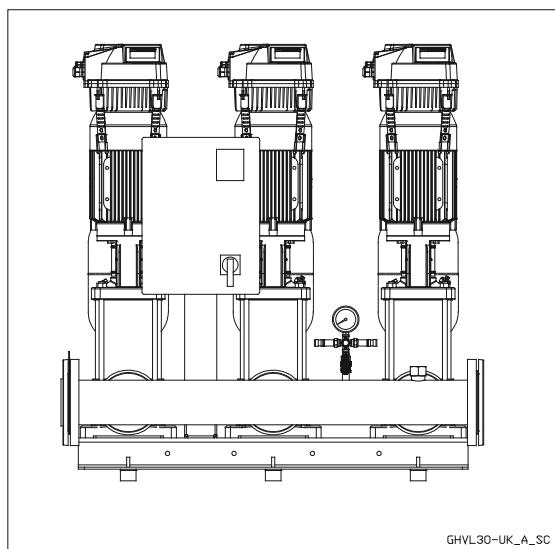
MARKET SECTORS

RESIDENTIAL-CIVIL, INDUSTRIAL

APPLICATIONS

- Water network supply in housing complexes, offices, hotels, shopping centres, industrial plants.
- Supply of water networks for agricultural applications (e.g. irrigation)

GHV30 Series



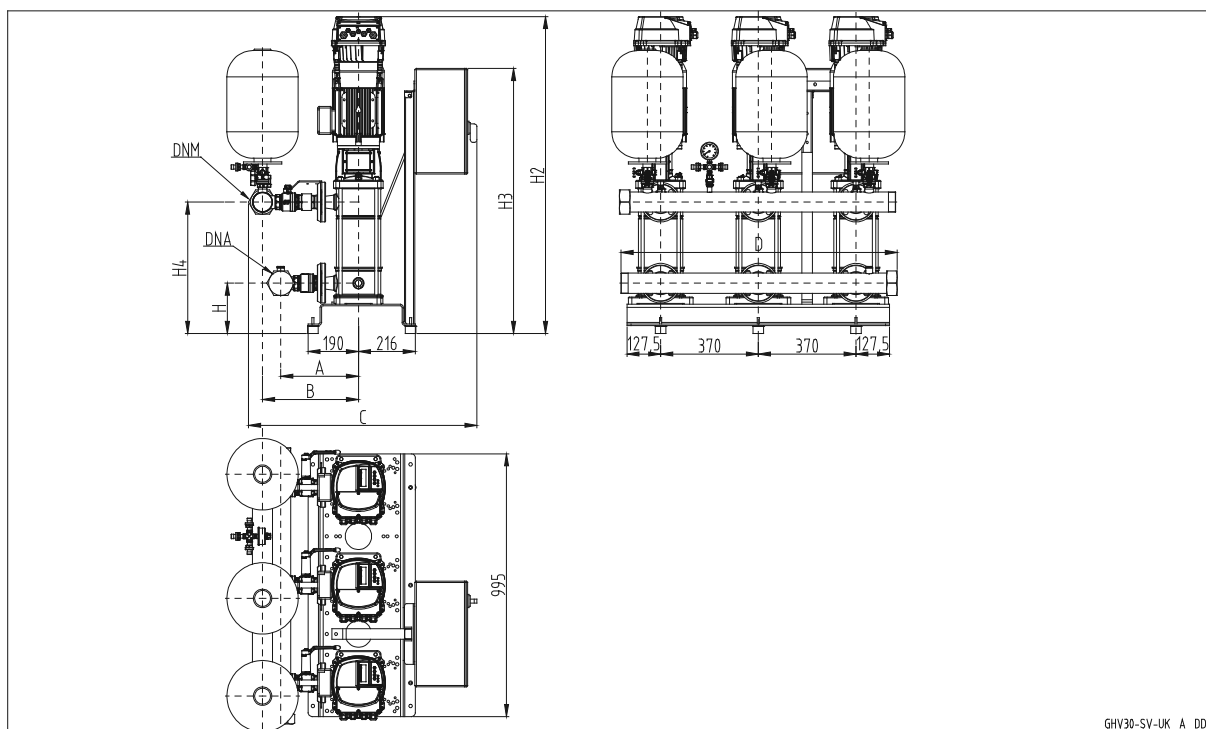
SPECIFICATIONS

- **Flow rate**
up to 480 m³/h.
- **Head**
up to 160 m.
- Electrical panel **supply voltage**:
 - single-phase 1 x 230V ± 10% 50/60Hz (GHV.../2)
 - three-phase 3 x 400V ± 10% 50/60Hz (GHV.../4)
- **Frequency** 50Hz
- **e-SV** vertical axis electric pump
- **HVL** series HYDROVAR
- **Protection class IP55** for:
 - electrical control panel
 - electrical pump motor
 - HVL converter
- Maximum operating **pressure**:
16 bar.
- Maximum liquid **temperature**:
max +80°C.
- Maximum electric pump **power**:
3 x 22 kW.
- **Progressive** motor start.

GHV30

GHV series booster sets with e-SV are certified for use with drinking water.

**SET OF 3 PUMPS
SINGLE-PHASE POWER SUPPLY (GHV30.../2)**



GHV30-SV-UK_A_DD

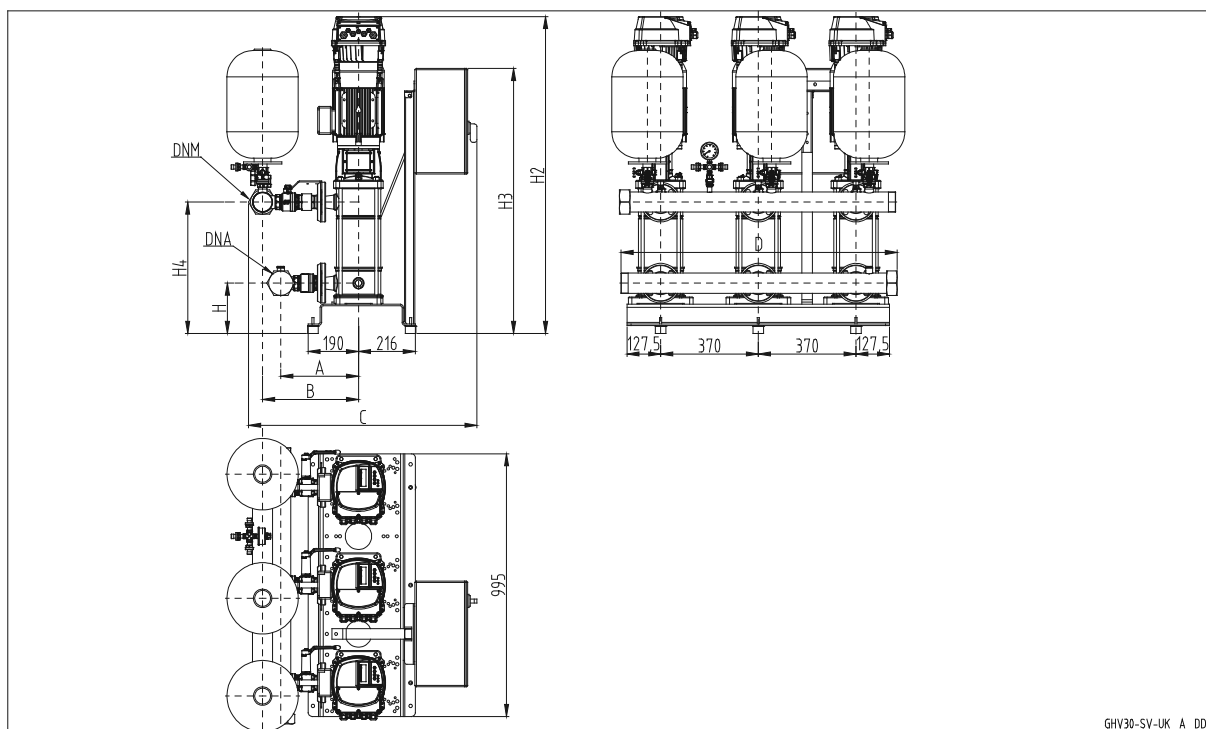
GHV30

GHV 30	DNA	DNM	A	B	C	D	H	H2	H3	H4
5SV08R011T	R 2"	R 2"	260	329	796	1040	185	971	876	377
5SV11R015T	R 2"	R 2"	260	329	796	1040	185	1056	876	427
5SV16R022T	R 2"	R 2"	260	329	796	1040	185	1216	876	577
5SV21R030T	R 2"	R 2"	260	329	808	1040	185	1351	876	702
10SV06R022T	R 2"1/2	R 2"1/2	294	356	831	1040	190	1073	876	401

Dimensions in mm. Tolerance ± 10 mm.

ghv30_10sv-r-uk-2_a_td

**SET OF 3 PUMPS
THREE-PHASE POWER SUPPLY (GHV30.../4)**



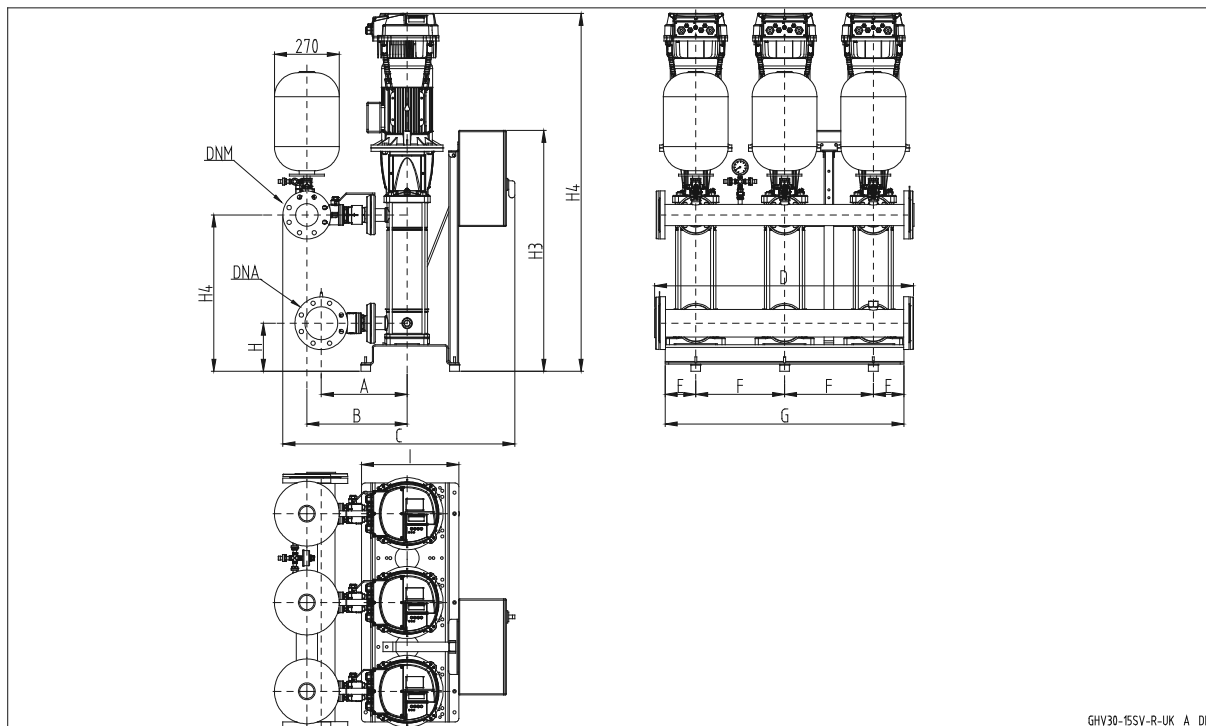
GHV 30	DNA	DNM	A	B	C	D	H	H2	H3	H4
5SV08R011T	R 2"	R 2"	260	329	796	1040	185	971	1003	377
5SV11R015T	R 2"	R 2"	260	329	796	1040	185	1056	1003	427
5SV16R022T	R 2"	R 2"	260	329	796	1040	185	1216	1003	577
5SV21R030T	R 2"	R 2"	260	329	808	1040	185	1351	1003	702
10SV06R022T	R 2"1/2	R 2"1/2	294	356	831	1040	190	1073	1003	401
10SV09R040T	R 2"1/2	R 2"1/2	294	356	843	1040	190	1200	1003	497
10SV13R055T	R 2"1/2	R 2"1/2	294	356	843	1040	190	1466	1003	625

Dimensions in mm. Tolerance ± 10 mm.

ghv30_10sv-r-uk-4_a_td

GHV30

**SET OF 3 PUMPS
THREE-PHASE POWER SUPPLY (GHV30.../4)**



GHV30-15SV-R-UK_A_DD

GHV30

GHV 30	DNA	DNM	A	B	C	D	E	F	G	H	H2	H3	H4	I
15SV05R040T	100	80	357	418	967	1084	128	370	995	200	1162	1003	459	406
15SV07R055T	100	80	357	418	967	1084	128	370	995	200	1396	1003	555	406
15SV09R075T	100	80	357	418	967	1084	128	370	995	200	1484	1003	651	406
15SV10R110T	100	80	357	418	1097	1224	260	440	1400	280	1673	1053	779	730
22SV05R055T	100	100	357	430	989	1084	128	370	995	200	1300	1003	459	406
22SV07R075T	100	100	357	430	989	1084	128	370	995	200	1388	1003	555	406
22SV10R110T	100	100	357	430	1119	1224	260	440	1400	280	1673	1053	779	730

Dimensions in mm. Tolerance ± 10 mm.

ghv30_15sv-r-uk-4_a_td